

ANCHORING

STUD ANCHORS

Also known as wedge anchors. Single-unit expansion fasteners designed for high-load anchoring in solid concrete or stone.



SLEEVE ANCHORS

Heavy-duty anchors for masonry applications. Can be installed without the need for a solid base material.



LAG SHIELDS

Medium-duty anchors suitable for concrete, brick, or mortar. Intended for use with a lag screw.



MACHINE SCREW ANCHORS

Two-component anchor with machine threads. Designed for installation in concrete, brick, or stone.



DROP-IN ANCHORS

High-strength machine-threaded anchor. Designed for heavy-duty installation in concrete or stone.



DOUBLE EXPANSION SLEEVES

Masonry expansion anchor. Expands to maintain full-length contact with the drilled hole.



CONCRETE SCREWS

Suitable for concrete, brick, or block. Provides a fast and simple fastening solution for light- to medium-duty uses.



SPRING TOGGLE WINGS

Permanent expansion fasteners. Expand behind the substrate (such as within a wall) to create a strong, reliable hold.



SNAPTOGGLE®

Permanent anchors for hollow materials. Commonly used in cavities such as drywall or masonry block.



CONICAL ANCHORS

Plastic anchors for sheet metal screws. Suitable for use in a wide range of base materials.



SELF DRILLING DRY-WALL ANCHORS

Fast-install plastic anchors for drywall. Designed for use with sheet metal screws.



HOLLOW WALL ANCHORS

Also known as molly bolts. Intended for light-duty fastening in drywall or other hollow-wall applications.



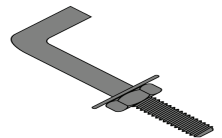
NAIL DRIVE ANCHORS

Permanent expansion anchors. Expand within the drilled hole when the drive pin is hammered in.



ANCHOR BOLTS

L-shaped machine-threaded anchors. Commonly set into concrete during the pouring process.



PLASTIC TOGGLE

Drive-in expansion anchors. Expand within the drilled hole to create a firm hold. Requires a hole matching the anchor diameter. Permanently installed.

